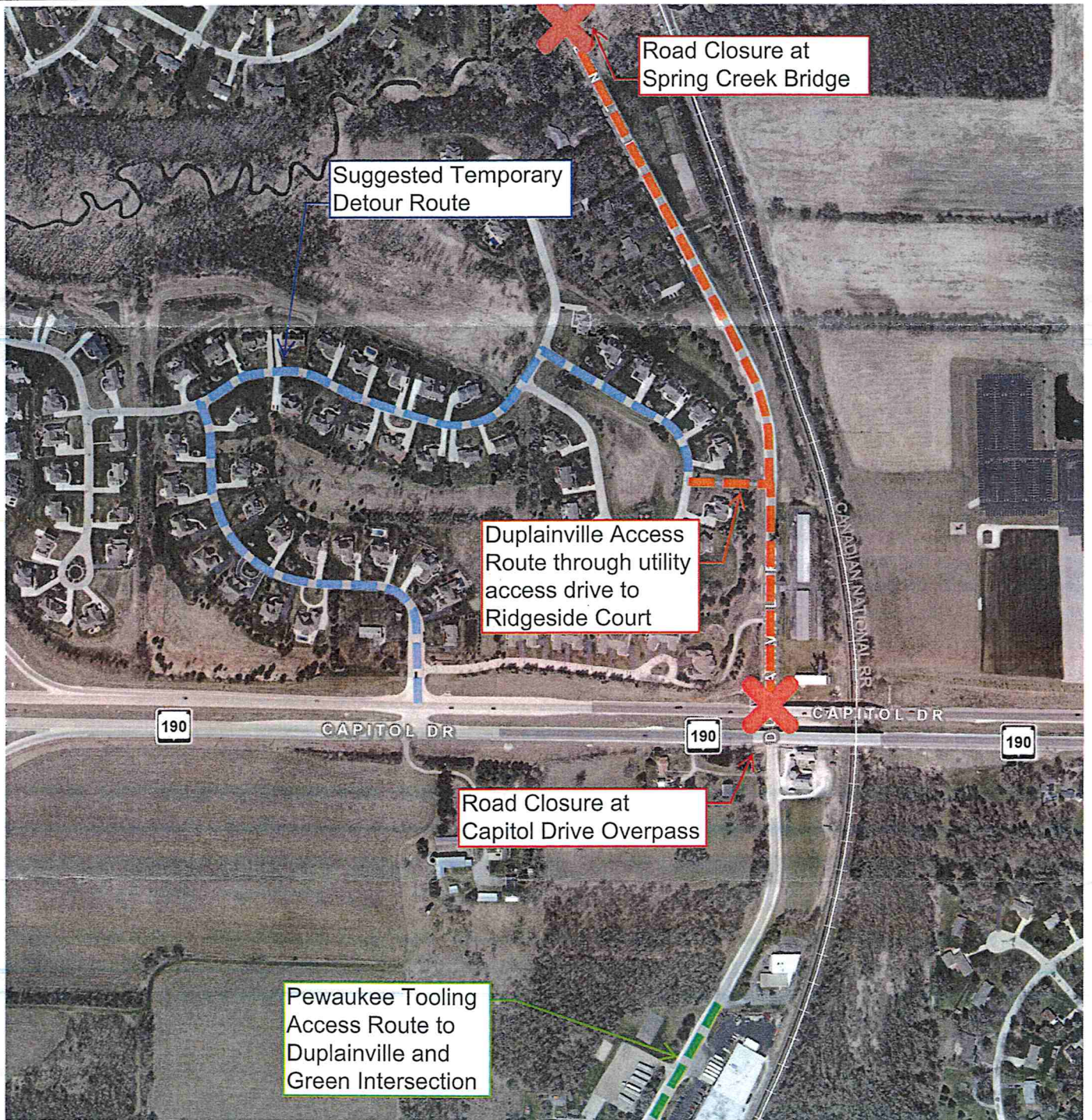


Business & Resident Access Detour 9/5/22-9/30/22*



Road Closure at
Spring Creek Bridge

Suggested Temporary
Detour Route

Duplainville Access
Route through utility
access drive to
Ridgeside Court

Road Closure at
Capitol Drive Overpass

Pewaukee Tooling
Access Route to
Duplainville and
Green Intersection



Note: Red crosses mark road closures at the Spring Creek Bridge and Capitol Drive Overpass

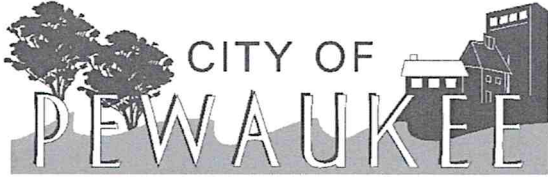
Legend: Blue Line: Temporary Detour Route
Orange Line: Duplainville Business & Resident Access Route
Green Line: Pewaukee Tooling Access Route

*Date Subject to Change

The information and depictions herein are for informational purposes and Waukesha County specifically disclaims accuracy in this reproduction and specifically admonishes and advises that if specific and precise accuracy is required, the same should be determined by procurement of certified maps, surveys, plats, Flood Insurance Studies, or other official means. Waukesha County will not be responsible for any damages which result from third party use of the information and depictions herein, or for use which ignores this warning.



Printed: 8/18/2022



**Department of Public Works
Engineering Division**

W240N3065 Pewaukee Road • Pewaukee, WI 53072

Phone: (262) 691-0804 • Fax: (262) 691-5729

Email: publicworks@pewaukee.wi.us

August 19, 2022

ALL ONE STORAGE LLC
100 WILMONT DR
WAUKESHA WI 53189

Dear ALL ONE STORAGE LLC:

As you may be aware, Duplainville Road is currently under construction. The contractor is in the process of paving the proposed concrete roadway from the Canadian Pacific railroad to the Capitol Drive overpass. Concrete pavement requires a substantial curing period to reach the required strength to convey vehicular traffic. Hard closures to through-traffic are put in place at the limits of concrete paving to prevent traffic access and allow the pavement to cure. Concrete paving will take place north of Quad Graphics and south of the Capitol Drive overpass in early September. Traffic will not be allowed to travel south from this location along Duplainville Road when this paving is taking place.

As a separate project, the Duplainville Bridge over Spring Creek is scheduled to be replaced this year. This project is expected to begin following Labor Day and will conclude around Thanksgiving. There will be a hard closure to through-traffic for the duration of the bridge project.

To maintain access to your property, starting on Tuesday, September 6, 2022, you will use the utility access drive connecting Duplainville Road to Ridgeside Court within the Wethersfield neighborhood. Please follow the suggested detour in the enclosed map. We anticipate that Duplainville Road will reopen to southbound traffic again in late September.

We appreciate your patience during the progression of this road project. If you have any concerns or questions, please contact Michaelis Gabbey, Chief Engineer-Streets & Development, or Magdelene Wagner, Director of Public Works at (262) 691-0804.

Sincerely,

Michaelis Gabbey, P.E.
Chief Engineer—Streets & Development

Enclosure